



## DEVELOPMENT NOTICE

### Discretionary Use

The Town of Torbay is in receipt of an application from 74 Evening's Path proposing to operate a portable band sawmill (Norwood Lumber man MN 27 sawmill) for personal hobby (domestic) use only. The portable band sawmill is mounted on a solid metal frame and has a 13.5Hp 420cc gasoline engine. The unit is proposed to be placed behind the existing detached garage. Owner will adhere to the Town of Torbay's Noise and Nuisance Regulations and Provincial Department of Fisheries, Forestry and Agriculture Domestic Mill License conditions. The property is located within the Residential Infill (RI) Land Use Zone of the Torbay Development Regulations 2015-2025, and a proposed Light Industry/Workshop Use is listed as discretionary. This application is processed in accordance with Regulations 33 and 90, requiring public notification.

Anyone wishing to comment on this proposal, is asked to contact the Town Office in writing. The deadline for written comments shall be **December 1, 2022, 12:00 noon**. Further information on this matter may be obtained by contacting the Town's Planning and Development Department.

---

1288 Torbay Road, P.O. Box 1160, Torbay, NL A1K 1K4  
TEL.: (709) 437-6532 • FAX (709) 437-1309 • [jslade@torbay.ca](mailto:jslade@torbay.ca) or [jschwarz@torbay.ca](mailto:jschwarz@torbay.ca)

# 74 Evening's Path

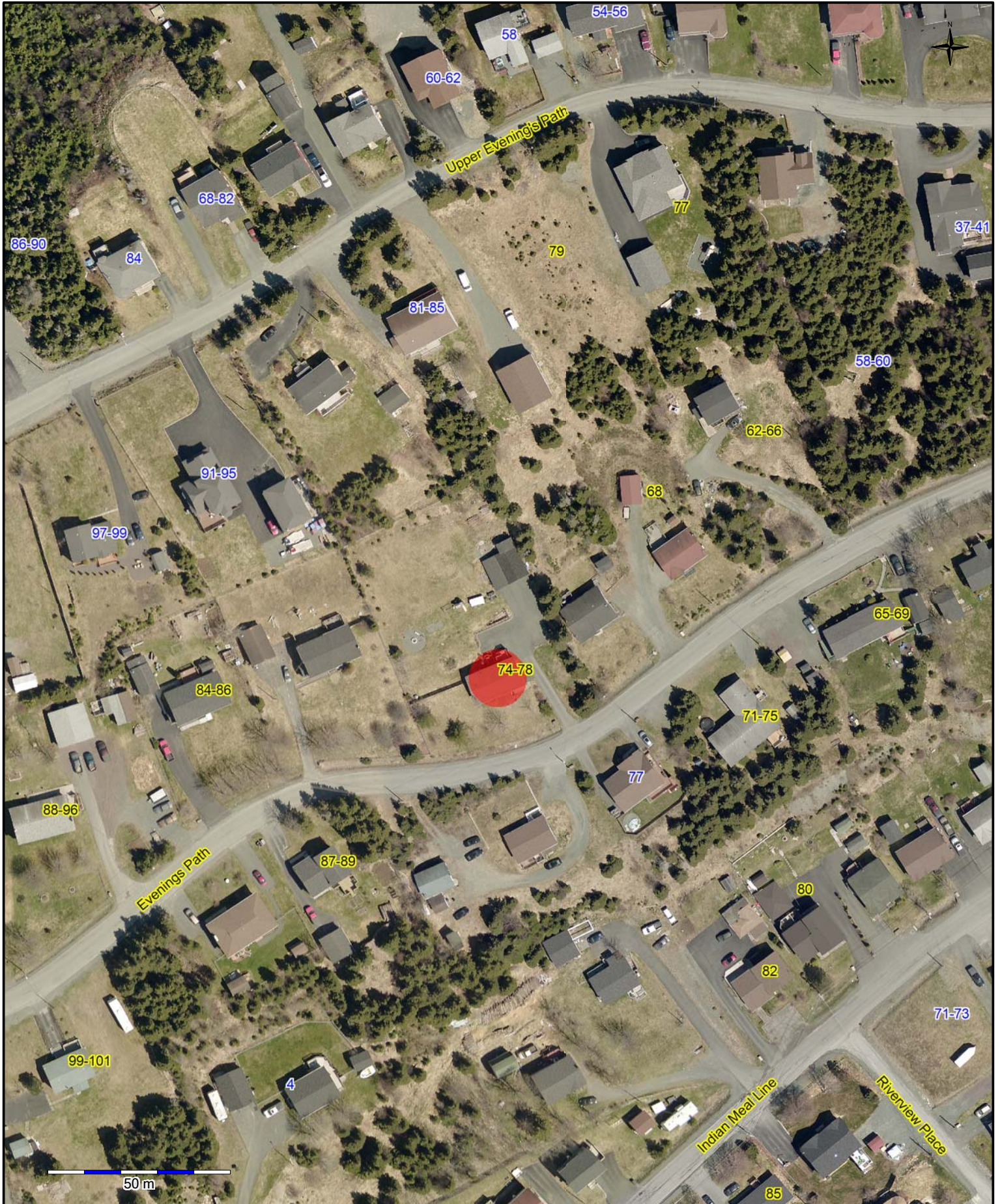




Photo courtesy of Manufactures website @ [www.norwoodsawmills.com](http://www.norwoodsawmills.com)